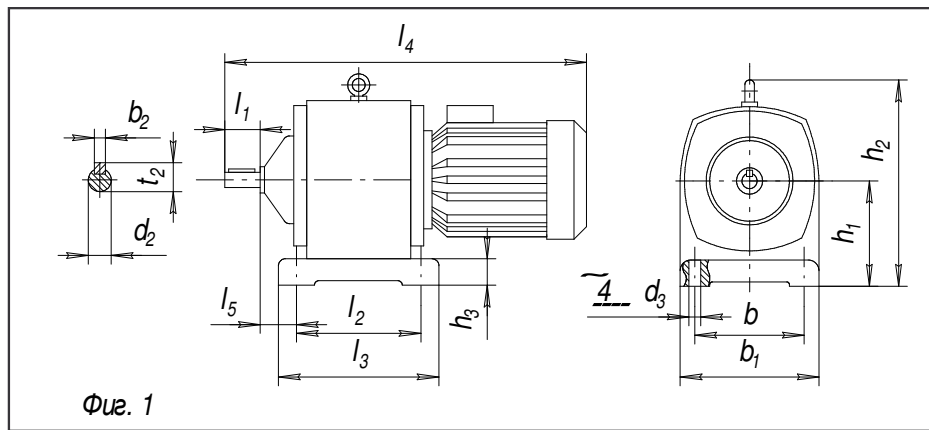


DIAGRAMS WITH THE JOINING DIMENSIONS – GMC 160, GMC 200, GMC 250, GMC 315 AND GMC 400:



OVERALL AND JOINING DIMENSIONS OF GMC 160, GMC 200, GMC 250, GMC 315 AND GMC 400
(see the above diagram)

Type of gear-motors	Type of motors	Marking [mm]													
		d2	d3	b	b1	b2	l1	l2	l3	l4	l5	h1	h2	h3	t2
GMC 160	T 80 A - 4	45 k 6	18	200	260	14	110	255	305	582	31	160	317	30	48.5
GMC 160	T 80 B - 4	45 k 6	18	200	260	14	110	255	305	595	31	160	317	30	48.5
GMC 160	T 90 S - 4	45 k 6	18	200	260	14	110	255	305	603	31	160	317	30	48.5
GMC 160	T 90 L - 4	45 k 6	18	200	260	14	110	255	305	628	31	160	317	30	48.5
GMC 160	T 100 LA - 4	45 k 6	18	200	260	14	110	255	305	676	31	160	317	30	48.5
GMC 160	T 100 LB - 4	45 k 6	18	200	260	14	110	255	305	684	31	160	317	30	48.5
GMC 160	T 112 M - 4	45 k 6	18	200	260	14	110	255	305	684	31	160	317	30	48.5
GMC 200	T 80 B - 4.6	55 k 6	22	240	310	16	110	310	370	650	41	200	395	35	59.3
GMC 200	T 90 S - 4.6	55 k 6	22	240	310	16	110	310	370	683	41	200	395	35	59.3
GMC 200	T 90 L - 4.8	55 k 6	22	240	310	16	110	310	370	723	41	200	395	35	59.3
GMC 200	T 100 LA - 4	55 k 6	22	240	310	16	110	310	370	744	41	200	395	35	59.3
GMC 200	T 100 LB - 4	55 k 6	22	240	310	16	110	310	370	744	41	200	395	35	59.3
GMC 200	T 112 M - 4	55 k 6	22	240	310	16	110	310	370	744	41	200	395	35	59.3
GMC 200	MO 112 M - 4	55 k 6	22	240	310	16	110	310	370	876	41	200	395	35	59.3
GMC 250	T 90 L - 4.6	70 m 6	26	285	375	20	140	342	412	783	38	250	464	40	74.5
GMC 250	T 100 LA - 4.6	70 m 6	26	285	375	20	140	342	412	804	38	250	464	40	74.5
GMC 250	T 100 LB - 4.8	70 m 6	26	285	375	20	140	342	412	804	38	250	464	40	74.5
GMC 250	T 112 M - 4	70 m 6	26	285	375	20	140	342	412	804	38	250	464	40	74.5
GMC 250	MO 112 M - 4	70 m 6	26	285	375	20	140	342	412	936	38	250	464	40	74.5
GMC 250	MO 132 S - 4	70 m 6	26	285	375	20	140	342	412	896	38	250	464	40	74.5
GMC 250	MO 132 M - 4	70 m 6	26	285	375	20	140	342	412	951	38	250	464	40	74.5
GMC 250	MO 160 S - 4	70 m 6	26	285	375	20	140	342	412	1040	38	250	464	40	74.5
GMC 250	MO 160 M - 4	70 m 6	26	285	375	20	140	342	412	1072	38	250	464	40	74.5
GMC 315	T 100 LB - 4	90 m 6	30	385	475	25	170	430	510	918	45	315	590	50	95.4
GMC 315	MO 112 M - 4.6	90 m 6	30	385	475	25	170	430	510	918	45	315	590	50	95.4
GMC 315	MO 132 S - 4	90 m 6	30	385	475	25	170	430	510	1009	45	315	590	50	95.4
GMC 315	MO 112 M - 6.8	90 m 6	30	385	475	25	170	430	510	1040	45	315	590	50	95.4
GMC 315	MO 112 M - 4	90 m 6	30	385	475	25	170	430	510	1022	45	315	590	50	95.4
GMC 315	MO 132 M - 4	90 m 6	30	385	475	25	170	430	510	1064	45	315	590	50	95.4
GMC 315	MO 160 M - 4	90 m 6	30	385	475	25	170	430	510	1169	45	315	590	50	95.4
GMC 315	MO 180 S - 4	90 m 6	30	385	475	25	170	430	510	1184	45	315	590	50	95.4
GMC 315	MO 180 M - 4	90 m 6	30	385	475	25	170	430	510	1244	45	315	590	50	95.4
GMC 400	MO 132 S - 4.6.8	110 m 6	36	475	600	28	210	540	640	1144	44	400	724	60	116
GMC 400	MO 112 M - 4.6	110 m 6	36	475	600	28	210	540	640	1184	44	400	724	60	116
GMC 400	MO 132 M - 4	110 m 6	36	475	600	28	210	540	640	1199	44	400	724	60	116
GMC 400	MO 160 S - 4	110 m 6	36	475	600	28	210	540	640	1269	44	400	724	60	116
GMC 400	MO 160 M - 4	110 m 6	36	475	600	28	210	540	640	1301	44	400	724	60	116
GMC 400	MO 180 S - 4	110 m 6	36	475	600	28	210	540	640	1326	44	400	724	60	116
GMC 400	MO 180 M - 4	110 m 6	36	475	600	28	210	540	640	1386	44	400	724	60	116
GMC 400	MO 200 M - 4	110 m 6	36	475	600	28	210	540	640	1429	44	400	724	60	116
GMC 400	MO 200 L - 4	110 m 6	36	475	600	28	210	540	640	1469	44	400	724	60	116