

DIAGRAMS WITH THE JOINING DIMENSIONS OF THE WORM GEARED-MOTORS IN AN CAST IRON BODY (GMW)

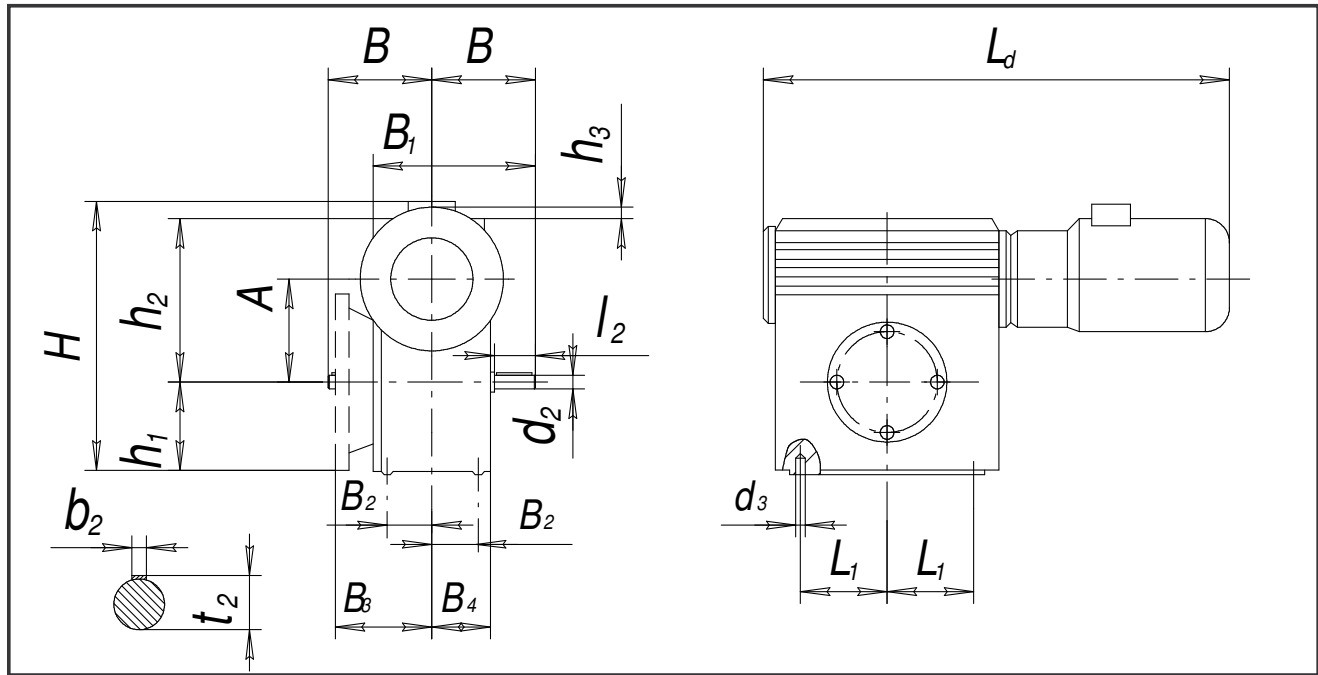


TABLE CONTAINING THE VALUES OF ALL THE PARAMETERS GIVEN IN THE ABOVE DIAGRAM OF WGM IN A CAST IRON BODY [mm]

Marking mm	$L_d$	$L_1$	$B$	$B_1$	$B_2$	$B_3$	$B_4$	$H$	$h_1$	$h_2$	$A$	$d_2$	$b_2$	$l_2$	$t_2$	$h_3$	$d_3$
Type																	
GMW 40/MO 56B-4D	342.0	44	84	144	28	*	53	166	56	75	40	$\phi 18js6$	6	28	20.5	25	M8
GMW 40/MO 63 A,B-4D	361.0	44	84	154	28	*	53	166	56	75	40	$\phi 18js6$	6	28	20.5	35	M8
GMW 50/MO 56 A,B-4D	356.0	44	98	158	37	93	58	183	63	90	50	$\phi 22js6$	6	36	24.5	20	M8
GMW 50/MO 63 A,B-4D	376.0	44	98	168	37	93	58	209	63	90	50	$\phi 22js6$	6	36	24.5	30	M8
GMW 50/MO 71 A,B-4D	388.5	44	98	168	37	93	58	115	63	90	50	$\phi 22js6$	6	36	24.5	30	M8
GMW 63/MO 71 A-4D	417.5	47	116	176	48	110	70	236	71	106	63	$\phi 25js6$	8	42	28	37	M8
GMW 63/T 80 A-4,6	462.5	47	116	176	48	110	70	243	71	106	63	$\phi 25js6$	8	42	28	37	M8
GMW 80/MO 71 B-4D	475.5	73	125	205	54	120	79	282	100	140	80	$\phi 28js6$	8	42	31	20	M10
GMW 80/T 80 A-4	510.5	73	125	205	54	120	79	289	100	140	80	$\phi 28js6$	8	42	31	20	M10
GMW 80/T 80 B-4	510.5	73	125	205	54	120	79	289	100	140	80	$\phi 28js6$	8	42	31	20	M10
GMW 80/T 80 S-4	518.5	73	125	205	54	120	79	312	100	140	80	$\phi 28js6$	8	42	31	20	M10
GMW 100/T 80 A-4	570.5	95	132	232	57	138	83	321	112	170	100	$\phi 35k6$	10	58	38	30	M10
GMW 100/T 90 S-4	586.5	95	132	232	57	138	83	330	112	170	100	$\phi 35k6$	10	58	38	30	M10
GMW 100/T 90 L-4	611.5	95	132	232	57	138	83	330	112	170	100	$\phi 35k6$	10	58	38	30	M10
GMW 100/T 100 LA-4	713.0	95	132	232	57	138	83	336	112	170	100	$\phi 35k6$	10	58	38	30	M10
GMW 125/T 90 S-4	708.5	126	185	285	67	157	97	383	140	200	125	$\phi 40k6$	12	82	43	25	M10
GMW 125/T 90 L-4	733.5	126	185	285	67	157	97	383	140	200	125	$\phi 40k6$	12	82	43	25	M10
GMW 125/T 100 LA-4	782	126	185	285	67	157	97	389	140	200	125	$\phi 40k6$	12	82	43	25	M10
GMW 125/T 100 LB-4	782	126	185	285	67	157	97	389	140	200	125	$\phi 40k6$	12	82	43	25	M10
GMW 125/T 112 M-4	782	126	185	285	67	157	97	393	140	200	125	$\phi 40k6$	12	82	43	25	M10
GMW 160/T 90 L-4	795.5	150	191	291	72	164	104	458	180	250	160	$\phi 50k6$	14	82	53.5	10	M10
GMW 160/T 100 LA-4	842	150	191	291	72	164	104	464	180	250	160	$\phi 50k6$	14	82	53.5	10	M10
GMW 160/T 112 M-4	882	150	191	291	72	164	104	468	180	250	160	$\phi 50k6$	14	82	53.5	10	M10

**! THE WORM REDUCTION GEARS CAN BE PRODUCED AS INDEPENDENT UNITS (WITHOUT ELECTRIC MOTORS) – SEE SECTION " REDUCTION**